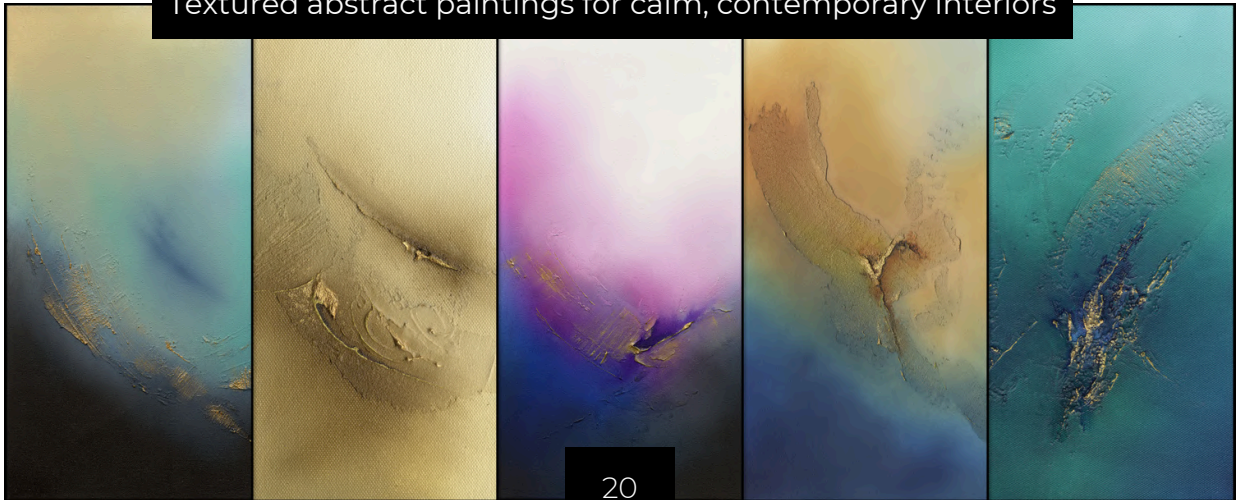




Textured abstract paintings for calm, contemporary interiors



20  
26

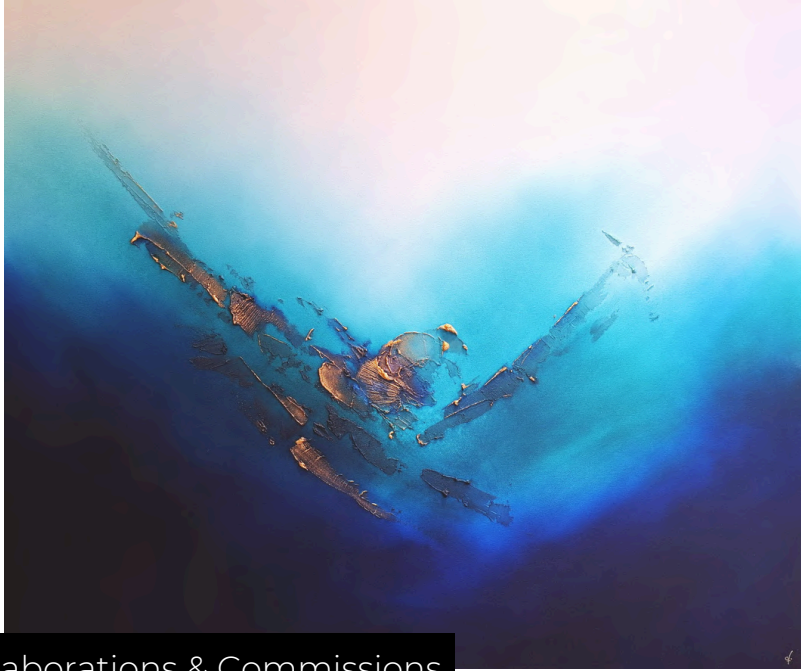


Example Interior Setting

## Art for Calm, Contemporary Spaces

Textured abstract paintings created to bring calm, balance, and quiet presence into a space.

Inspired by landscape and aerial perspective, my work combines hand-built texture with layered acrylics and inks, creating pieces that sit naturally within an interior and reveal more over time.

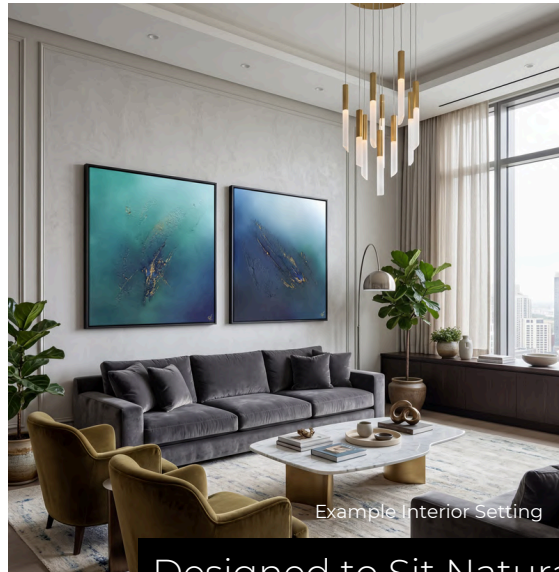
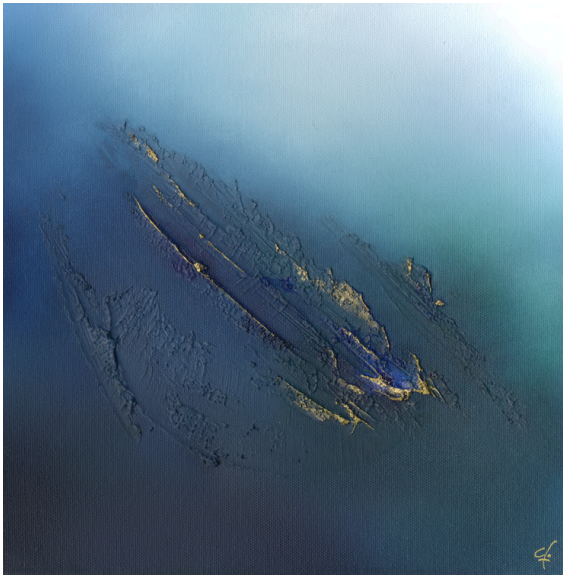


## Industry Collaborations & Commissions

My work has been selected for residential and commercial interiors, with pieces currently showcased through The Brighton Box Gallery and specified for projects via LDN Collections.

I am actively building new partnerships with interior designers. A collaborative relationship tailored to your project's specific needs is central to my practice. Whether a singular statement piece, a cohesive series, or a bespoke commission matched to a specific scheme, I work to complement the palette, scale, and atmosphere of a space.





Designed to Sit Naturally Within a Space

Rather than being an afterthought, my pieces are created to become an integral part of the room's atmosphere. By balancing hand-built texture with carefully considered colour palettes, each piece is intended to anchor a space, adding depth and presence without overwhelming a carefully curated environment.

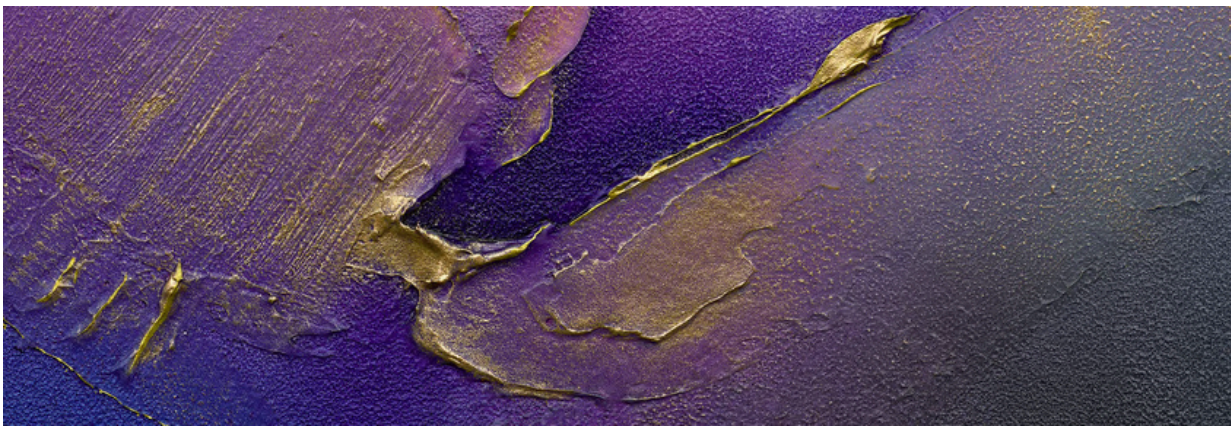


## Colour, Texture, and Quiet Presence

Example Interior Setting

Palettes range from bold, expressive statements to refined, muted hues, allowing each piece to be adapted to the specific requirements of an interior and its narrative.

At its core, my work is crafted to foster a sense of calm and reflection. I focus on creating art with lasting resonance - pieces that enhance the atmosphere and offer a subtle, sophisticated depth that lives beautifully with the room over time.



I aim to make the process of commissioning artwork straightforward and collaborative.

- Commissions tailored to each setting.
- Typical lead-time for original works is 2-6 weeks depending on size and number of pieces, and 1-2 weeks for archival-quality giclée prints.
- Digital previews available throughout a commission.



Example Interior Setting

Working Together

- UK-Wide shipping available.
- International delivery on request.
- Works are ready to hang.

If you're working on a project and would like to explore how my work could fit, I'd love to discuss ideas or provide visuals.



Selected Works

Example Interior Setting



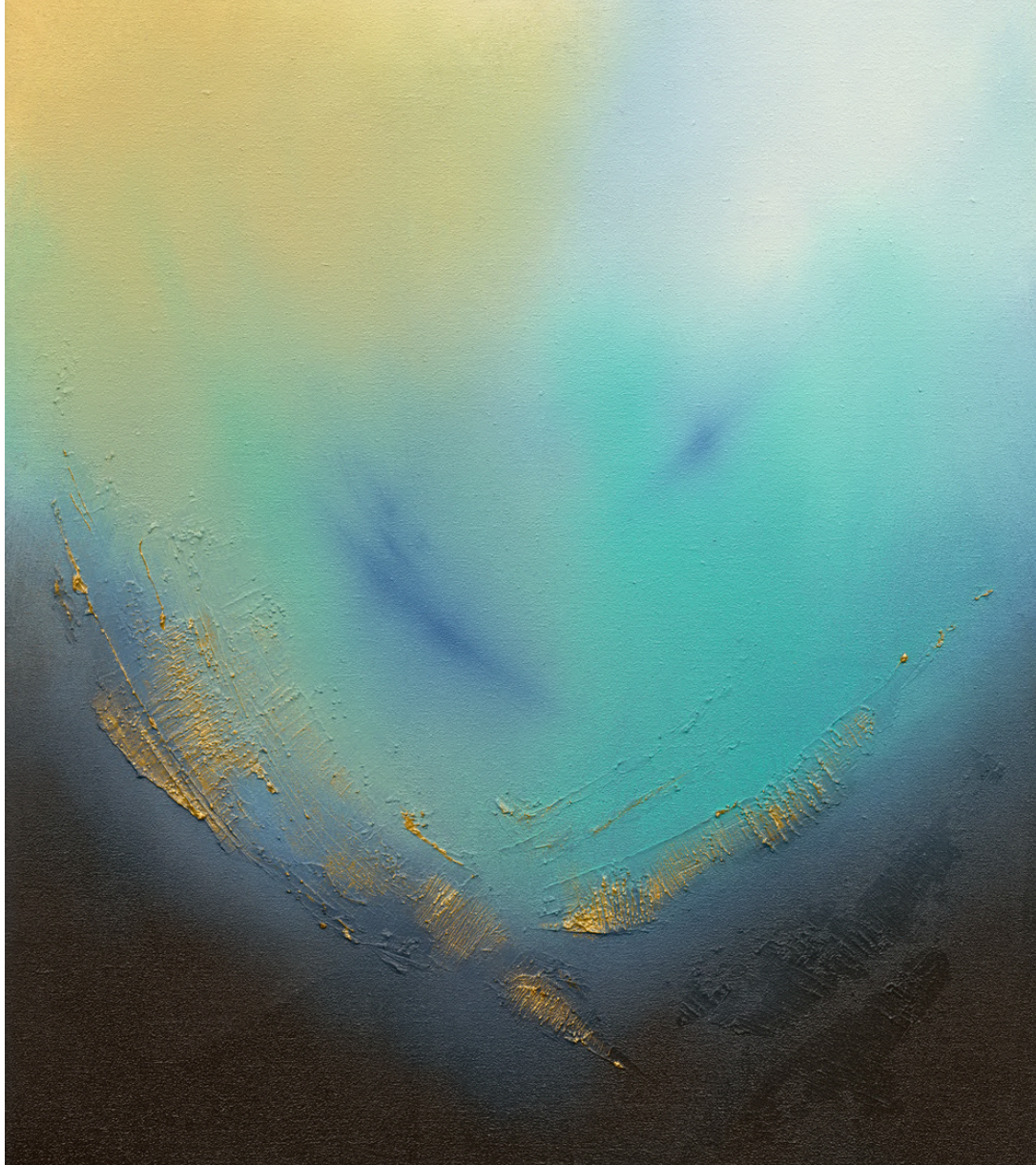


Example Interior Setting

Solaris | Acrylic, ink, and textured medium on canvas

Emberlight

Acrylic, ink, and textured medium on canvas





Example Interior Setting

Glacium | Acrylic, ink, and textured medium on canvas

Rising Dawn | Acrylic, ink, and textured medium on canvas



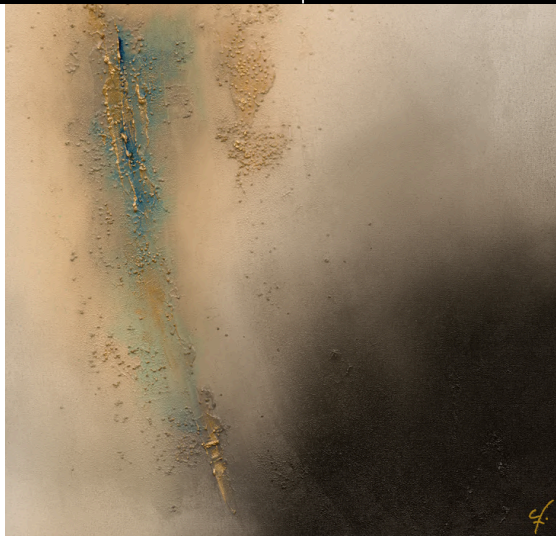


Example Interior Setting

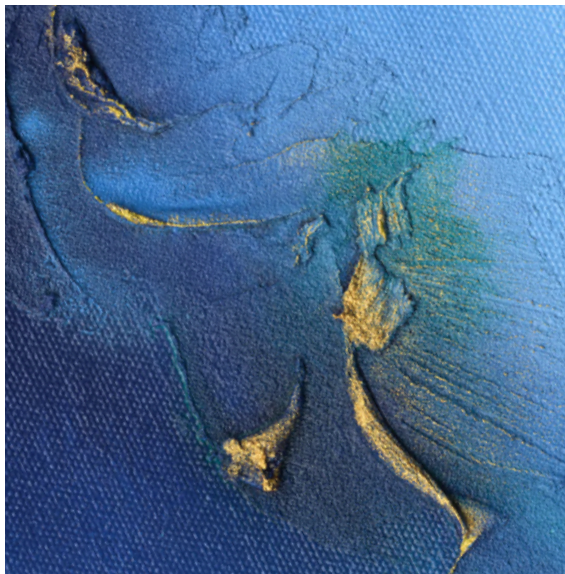
Redshift

Acrylic, ink, and textured medium on canvas

Tidal 1 | Acrylic, ink, and textured medium on canvas



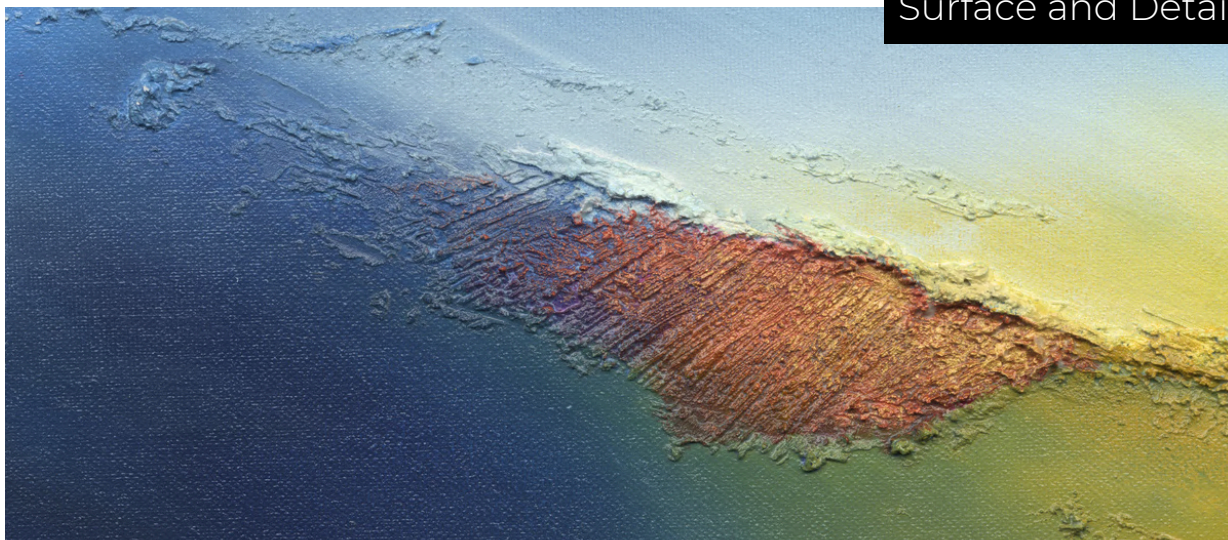
Tidal 2 | Acrylic, ink, and textured medium on canvas



---

Each piece is built through a layered, hands-on process, creating surfaces that respond to light and perspective.

As a piece is lived with, changing light and viewpoint begin to bring out the surface, quietly revealing the finer details within the texture.



Surface and Detail



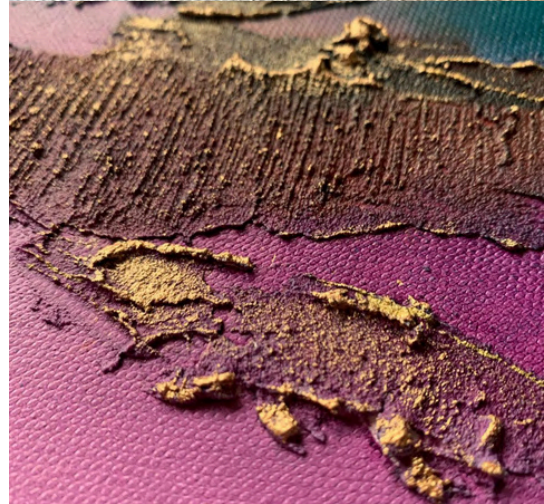
## Surface, Space, and Stillness

Based near Ashdown Forest in East Sussex, I create abstract paintings defined by layered, tactile texture.

My work is inspired by landscapes seen from above - both terrestrial and otherworldly, and the sense of openness and quiet freedom that comes with a higher viewpoint.

After a period of challenge and change in 2024 - 25, I stepped away from my work in special educational needs education to focus fully on my painting practice. This shift has shaped the direction of my work, with a growing emphasis on calm, balance, and reflection.

I work with texture in a very hands - on way, building the surface is an important part of the process for me - it's physical, tactile, and slow. I apply modelling paste to create depth and detail, then soften the surface with blended acrylics before letting inks and water move naturally across the canvas. This balance between intention and release is central to how each piece develops.



## Contact

[www.chrisfryart.co.uk](http://www.chrisfryart.co.uk)

[hello@chrisfryart.co.uk](mailto:hello@chrisfryart.co.uk)

[instagram.com/chrisfryart](https://www.instagram.com/chrisfryart)

+44 (0)7921 509005

Original works | Commissions | Small series | Licensing enquiries

